

Textease Top Tips CT

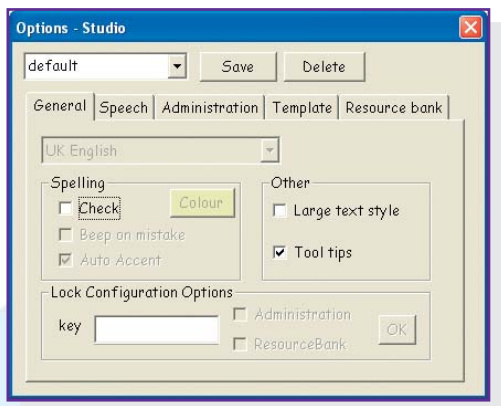


Top Tip 16

Switching the spell checker on/off

Often when working in a different language or writing in 'fantasy' situations or where proper names form a major part of the writing it is useful to be able to switch the spell checking function off so that words do not appear highlighted on the screen.

- 1 Go to **Tools > Options > General** and remove the tick from the 'Check' box.



- 2 To use the spell checker again place a tick in the 'Check' box.

